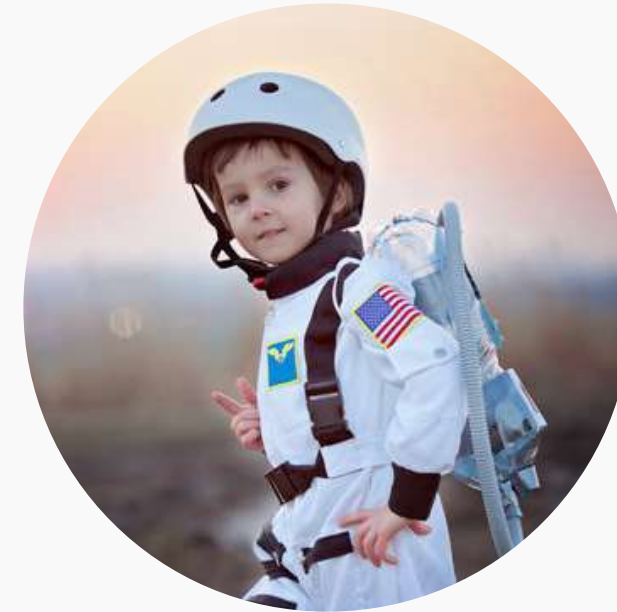


**READY**



**SET**

**WIN!**





# PT. MOHAN LAL GLOBAL SCHOOL



WWW.PTMLGLOALSCHOOL.COM

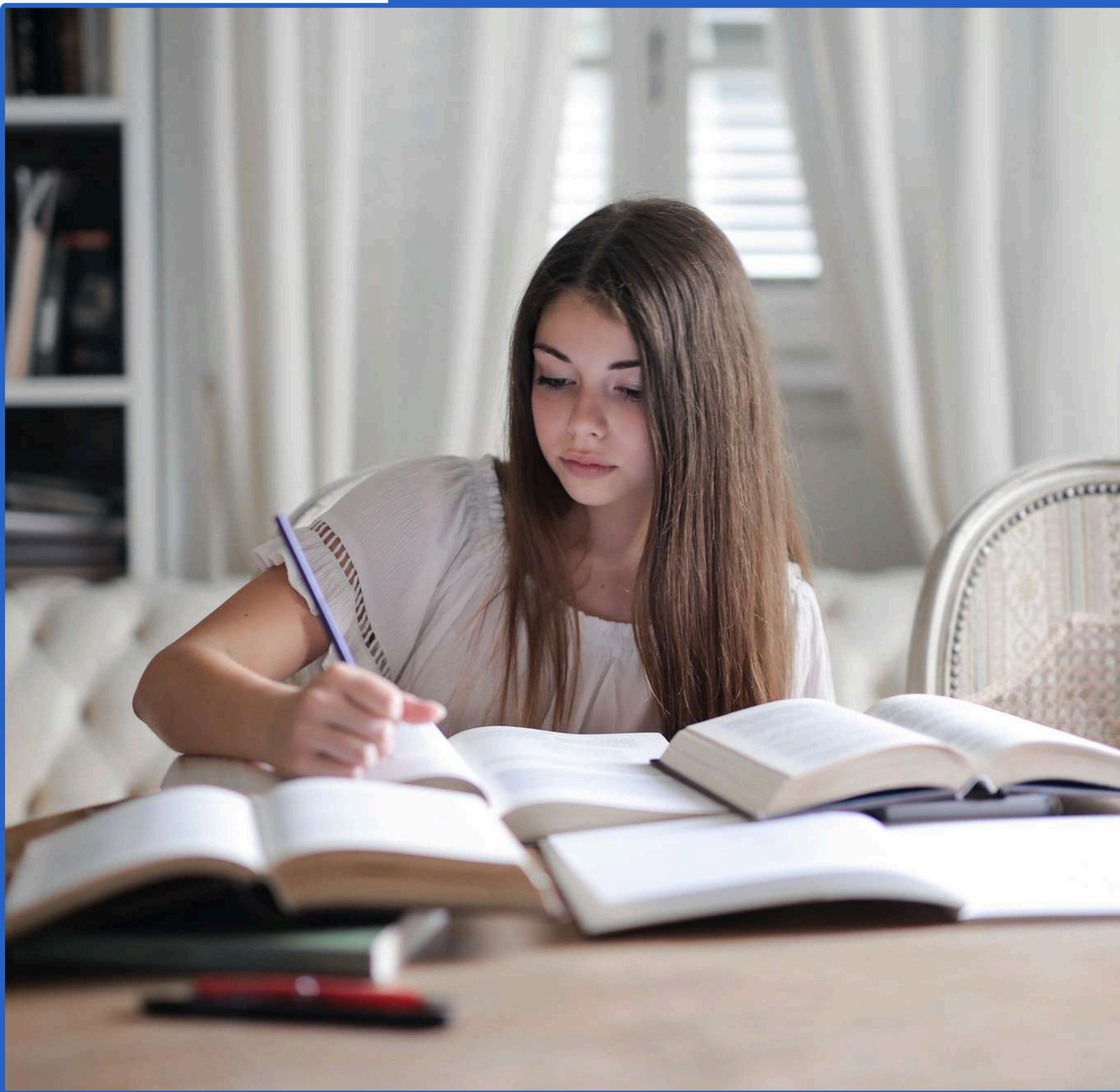




# Welcome To Our School

**" WE ARE GIVING YOU A PLATFORM WHERE DREAMS TAKE FLIGHT AND FUTURES BEGIN."**

We warmly welcome you to Pt. Mohan Lal Global School, a place where learning, growth, and excellence come together. Our school is dedicated to providing a nurturing environment that supports academic achievement, character development, and global values. We are proud to have you as part of our school community and look forward to a journey of success and discovery together.





## School Vision

"Our vision is to nurture visionary leaders who will excel academically, grow ethically, and contribute meaningfully to the global community.

At Pt. Mohan Lal Global School, we strive to create an inclusive, innovative, and dynamic learning environment where every student is empowered to discover their true potential. We aim to foster critical thinking, creativity, and compassion, cultivating responsible global citizens who will shape a brighter future for all."

## School Mission

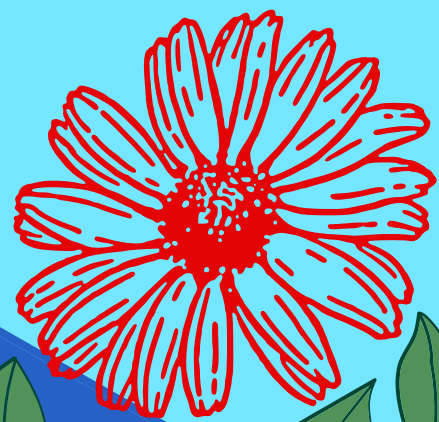
Our mission is to provide a transformative educational experience that empowers students to achieve their full potential, both academically and personally. We are committed to fostering a diverse, inclusive environment where creativity, critical thinking, and ethical values thrive. Through innovative teaching methods, we inspire students to become compassionate leaders, responsible global citizens, and lifelong learners who contribute positively to society."





## It begins with a dream, whatever it might be.

What students dream to be in their childhood comes from the purest corners of their heart and genuine interest of their minds. It is the role of education to recognize these unique aspirations and foster them so that children learn to use their talents in real life. This is what makes learning fun. This is what encourages children to do better. Most importantly, it becomes the basis of a not only successful but happy life when a child finds a school that believes in their dream.



**"My teachers say that I have a bright future and am never afraid to speak my mind, so I shall become a lawyer. I will stand up for the rights of the poor and orphans."**

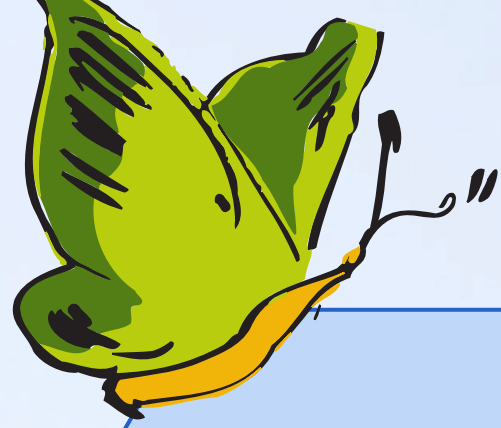


**"I saw a program on TV about space and since then I dream of only one thing: I want to go to the moon! It must be so beautiful to look down at the Earth from space. I wonder whether I will be able to see India- it's quite big, isn't it?"**



**"I don't like when my friends and family fall sick or are in pain. I want to make a medicine that cures any disease in one day. I am determined to become the first doctor in my family!"**





## WE LET THE CHILD EXPLORE THE FIELD

It's essential that a child sees and feels what lies in the outside world for them to truly know what suits them. Hence, we create that world of opportunities within their campus life so that they can choose their goals confidently. Students get the exposure across academics and co-curricular.



# ACADEMICS

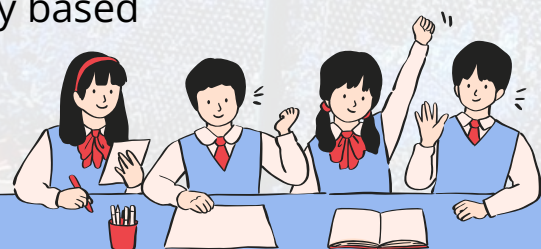


## Activity-based Lessons

Activity-based learning is the process of learning by doing. As opposed to asking kids to simply listen and take notes, activity-based learning encourages students to actively participate in their own learning experience through practical activities such as problem-solving and independent investigation.

## Differentiated Instruction

By considering varied learning needs, teachers can develop personalized instruction so that all children in the classroom can learn effectively. To do this, a teacher sets different expectations for task completion for students, specifically based upon their individual needs.

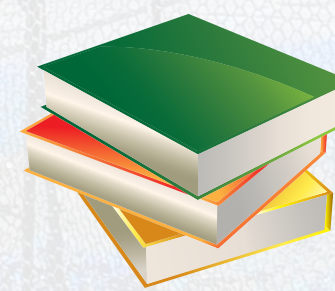


## Integrated Learning

The integrated curriculum is about making significant connections between subjects or skills that are usually addressing several different subject areas. It focuses on making connections among concepts and experiences so that information and skills can be applied to novel and complex issues or challenges.

## 21st Century Skills Programme

21st Century Skills are the skills that are required by an individual for his/ her holistic development so that he/she can contribute to the progress and development of his society/ nation and world.



# CO-CURRICULAR



Dance



Basketball



Arts & Craft



Music



Tennis



Badminton

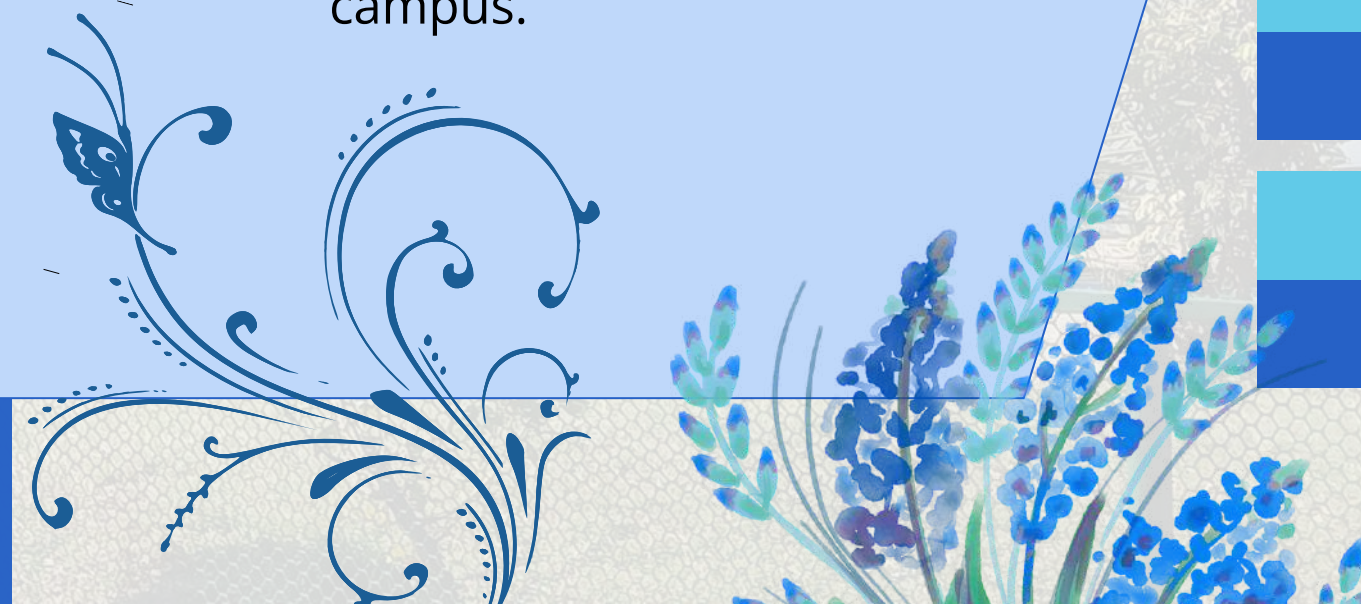


Chess



## EACH AMBITION IS SUPPORTED WITH INFRASTRUCTURE

The right ambience is needed in imparting quality education. It makes it interesting and gets the children motivated to come to school, this, in turn, improve the attendance and interest of students in learning. A school building should be made on planning and love, and not just bricks and stone. A great deal of thought has gone into transforming brick walls and concrete slabs into the architectural beauty that is the PML campus.



# OUR 5 FOLD TEACHING APPROACH

## TEACHERS LEAD THE WAY FOR HOLISTIC DEVELOPMENT

Teachers at PML not only cover the syllabus but the lessons for life. Right from pre-schooling to higher standards, they play an essential role in shaping the future of students. They set a tone of the school, mentor and teach children and nurture them well. In the comfort of an encouraging teacher, a child opens up, loses the fear to fail and tries harder to excel. Our teachers possess a passion for the subjects that they teach and genuine care for the students with whom they connect. They inspired kids to play with ideas, think deeply about the subject matter, take on more challenging work, and even pursue careers in a particular field of study



### 1. PHYSICALLY

Inculcating healthy dietary habits early on and engaging kids in physical activities



### 2. MORALLY

Inculcate virtues through idealistic behaviour and encouragement to become a better human



### 5. INTELLECTUALLY

Grow capacities for thinking, reasoning, relating, judging, conceptualizing



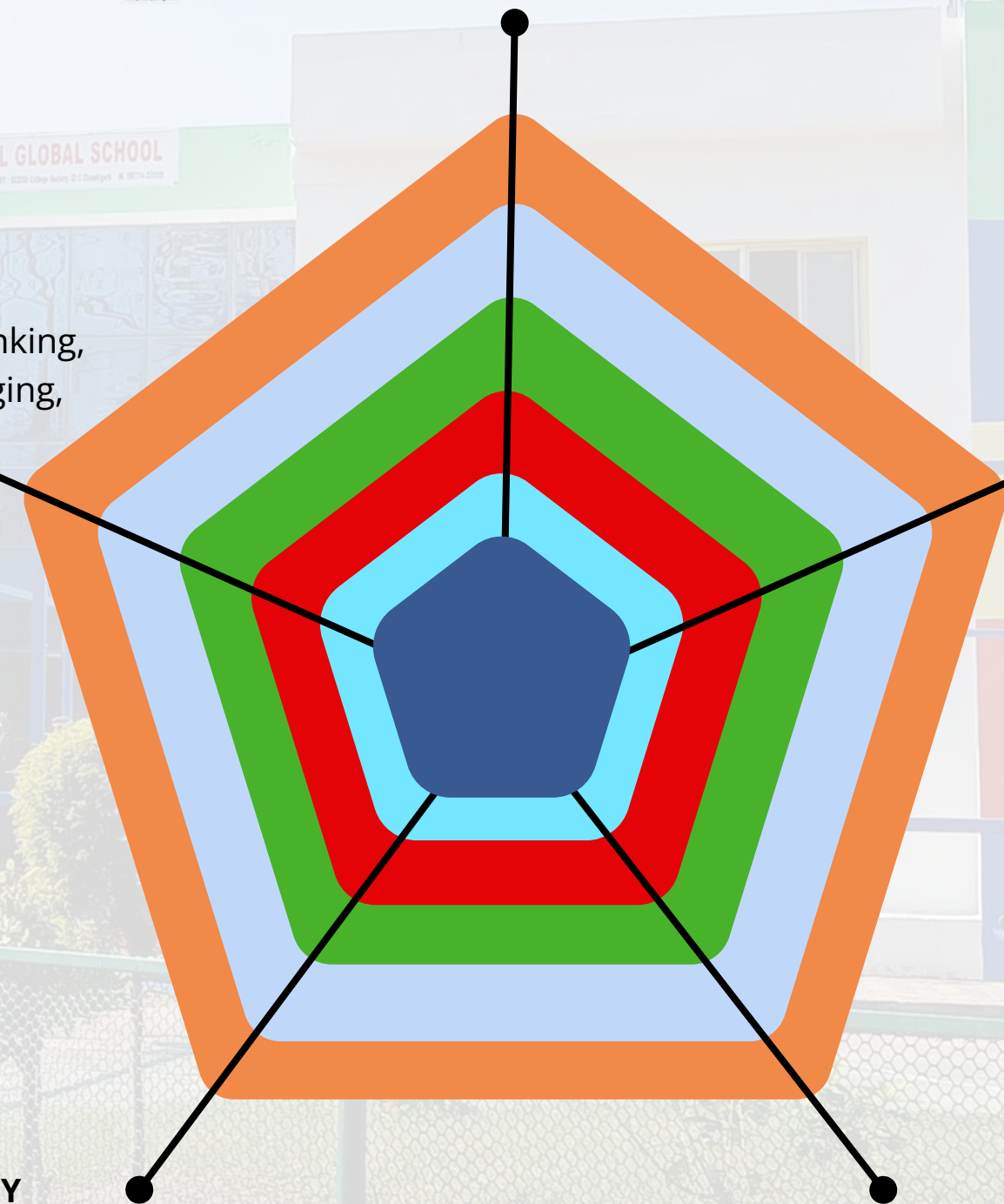
### 4. EMOTIONALLY

Ability to maintain relationships, manage emotions, cope with stress and develop confidence



### 3. SPIRITUALLY

Shape every child to practice gratitude and kindness for the nourishment of the soul





# Our Contact



9877423500, 1832915615



[www.ptmlglobalschool.com](http://www.ptmlglobalschool.com)

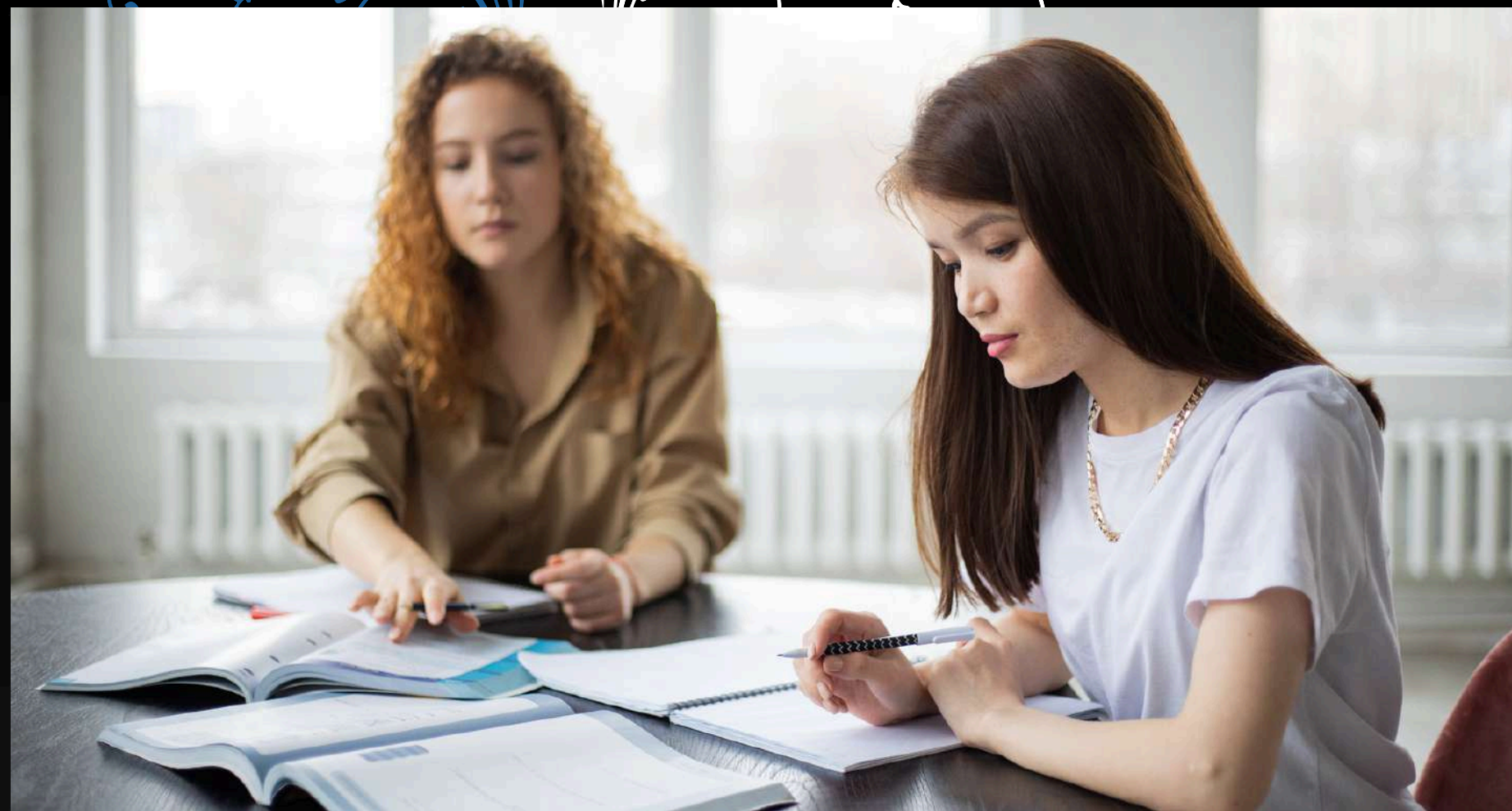


[ptmlglobal@gmail.com](mailto:ptmlglobal@gmail.com)



Near Dana Mandi, Batala Road, Fatehgarh Churian  
Distt. Gurdaspur, Punjab 143602

Pt. Mohan Lal Global School is a center of academic excellence and holistic development, dedicated to nurturing well-rounded individuals. With a dynamic CBSE curriculum, modern infrastructure, and a strong focus on values, the school fosters intellectual curiosity, creativity, and leadership. Here, students grow not only as scholars but also as responsible global citizens, ready to face the challenges of the future with confidence and compassion.





# Thank You

Thank you for taking the time to explore the values and opportunities offered by Pt. Mohan Lal Global School. We are truly honored that you are considering joining our vibrant and diverse educational community.

At Pt. Mohan Lal Global School, we believe that every child is unique, with unlimited potential waiting to be discovered. Our mission is to nurture a love of learning, foster creativity, and cultivate leadership skills that will serve our students throughout their lives. Our experienced and passionate educators are dedicated to providing a supportive and inclusive environment where every child can thrive academically, socially and emotionally.

Thank you once again for considering us as a partner in your child's education. We are excited to welcome you to our school community, where the journey of learning is an exciting, collaborative adventure. If you have any questions or would like to learn more about our programs, please feel free to reach out. We would be happy to assist you.

With warm regards,  
**The Team at Pt. Mohan Lal Global School**

## About School

Pt. Mohan Lal Global School strives to provide quality education in Fatehgarh Churian. While the institution offers a range of academic and extracurricular opportunities, prospective students and parents may wish to consider various factors, including employee feedback, when evaluating the school.



# Pt. Mohan Lal Global School

CBSE Curriculum

Admissions Open | Pre - Nursery onwards



Near Dana Mandi, Batala Road Fatehgarh Churian



[www.ptmlglobalschool.com](http://www.ptmlglobalschool.com)



9877423500, 1832915615



Pt. Mohan Lal Global School

# LEAD

# ACHIEVE

# SUCCEED

